

Cranberry Pottery 1975 – 2014

In 1974 Carol Bieber and Mark Cunningham started a small pottery business in the Cranberry area of Powell River. Successful right from the beginning, the brown spotty stoneware sold briskly and business grew steadily. Mark Cunningham left in 1982, and was replaced by a long succession of potters, who were employees of the company, most notably Lin Morrison. Lin stayed on permanently to later become part owner.

Almost all the pottery pieces were done by an individual potter, with their personal stamp in addition to the Cranberry Pottery stamp on the bottom of pots. In about 1990 dates were added to the bottom of pots, e.g., 91 for 1991, and 00 for 2000. The glazing, however, was a group effort and all potters were encouraged to develop the necessary skills. Over the years new designs were developed, and old ones dropped as tastes and materials changed, and the clay body eventually morphed to almost white stoneware. All surface decoration was hand painted and all designs were unique to Cranberry Pottery. However it should be noted that almost all employees were trained to be full-fledged potters, not just skilled in one area. Everyone made pots, glazed, shared in kiln loading both bisque and the fuel fired Cone 10 car kilns, and worked in the sales area as well.

For a variety of reasons, various production methods were used, not just throwing on the potter's wheel. Castware was initiated because a non-porous porcelain clay was required for vases; extruded pieces were needed for hand built rectangular casseroles; jiggered ware made for matching dinnerware, and was much easier on aging bodies. All molds and all designs were produced in house.

Business peaked around 2000, with upwards of ten people on the payroll. Although the official close date was Dec. 31, 2013, all of the orders were not filled until April 12, 2014.

For three years there was a subsidiary shop in Campbell River which produced a brighter Cone 2 earthenware pottery in pinks, blues and yellows. The potters were Tracy Fleming, Carol Bieber, Laurie Shilleto, Aimee Dupont and Lori Porter.

This is a list of most of the potters over the years. There are too many to show individual stamps.

Carol Bieber 1975 – 2014

Mark Cuningham 1975 - 1982

Lin Morrison 1980 – 2014

Lu Wuthrich 1987 – 1991

Myrtle Cunningham 1980 – 1985

Pam Begbie 1987 – 2010

Claire Heffernan 1982; 1987

Deb Lesuk 1988 – 1995

Mary Anne Grantham 1988

Alex Graham 1989 – 2005

Dawn Swanson 1989 – 1991

Penny Coyle 1992 - 1993

Adrienne Robillard 1993 – 1994

Claudette Sarrazin 1995 – 2014

Charlene Price 1996 – 2000

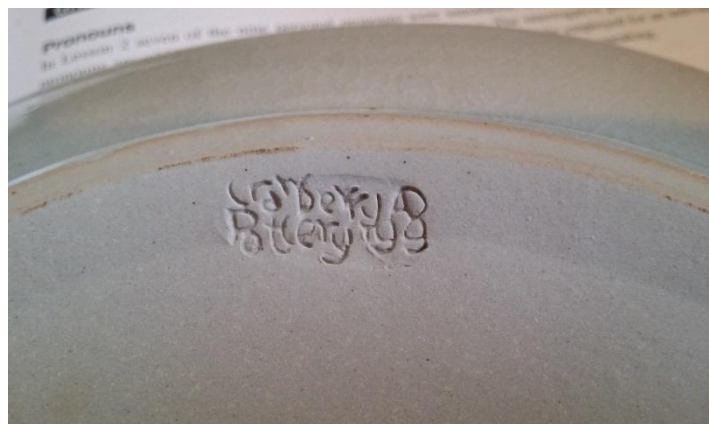
Tracy Fleming 1996 -1997

Alison Sawyer 2005

Terry Reiben 2006 – 2010

Tyler McCulloch 2011 – 2014

Pamela Mathews 2009 - 2014



This pot was made in 1999 by Aimee Dupont



The five main patterns – Blue Leaf, Cranberry, Grass Iris, Tiger Eye and Blackberry.
More than 100 items were kept in stock in these patterns.

Below are a few of the special patterns available as limited stock or by order.



Sunflower



Bouquet, Crocus, Tulip



Coast



Heron



Kid Set (also came in trains, dinosaurs, and teddy bears)



Bamboo



Fish pattern



Tapestry pattern -earthenware